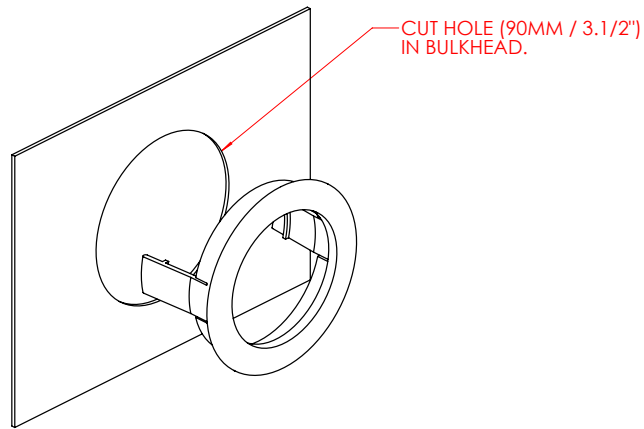


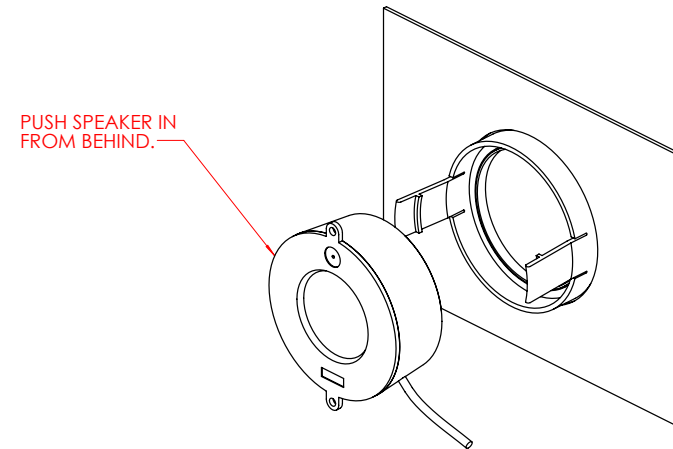


Installation of Bulkhead Mounts for Coxmate Speakers

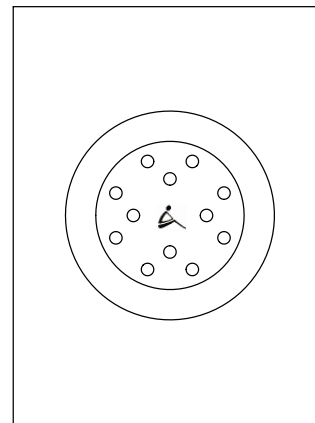
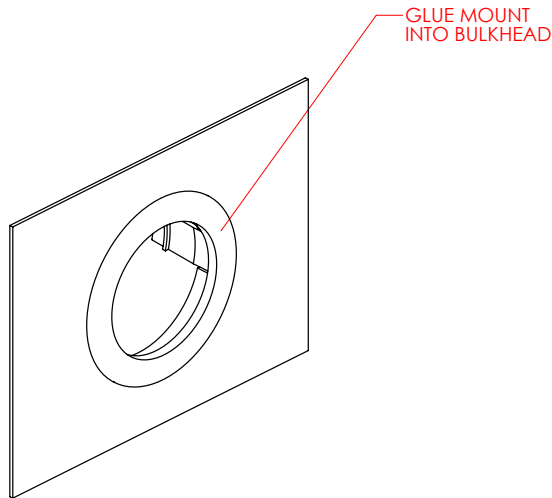
1. Cut 90mm (3.5") diameter hole using hole saw or similar in appropriate position of Bulkhead



3. From rear push Speaker in from behind ensuring both sides 'click' into place



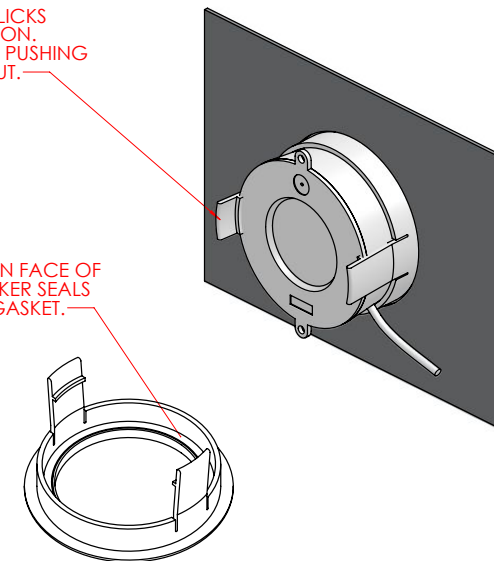
2. Use Silicon or Epoxy (or similar) to glue the Mount in the cut hole with the 'legs' facing inwards. Allow glue to set



VIEW FROM FRONT OF
INSTALLED SPEAKER

SPEAKER CLICKS
INTO POSITION.
RELEASE BY PUSHING
FINGERS OUT.

LIP ON FACE OF
SPEAKER SEALS
ON GASKET.



Removal: unclip each leg of the Bulkhead Mount